

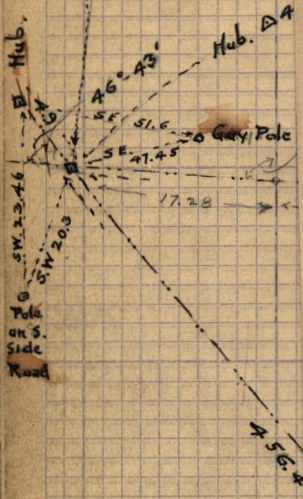
Nov. 17-1919 - Survey of County Road Wilson Lanes W. of 1/4 Sec. line N&S. in Sec. 30
 T. 6 - N. R. 1 - W.

(40)

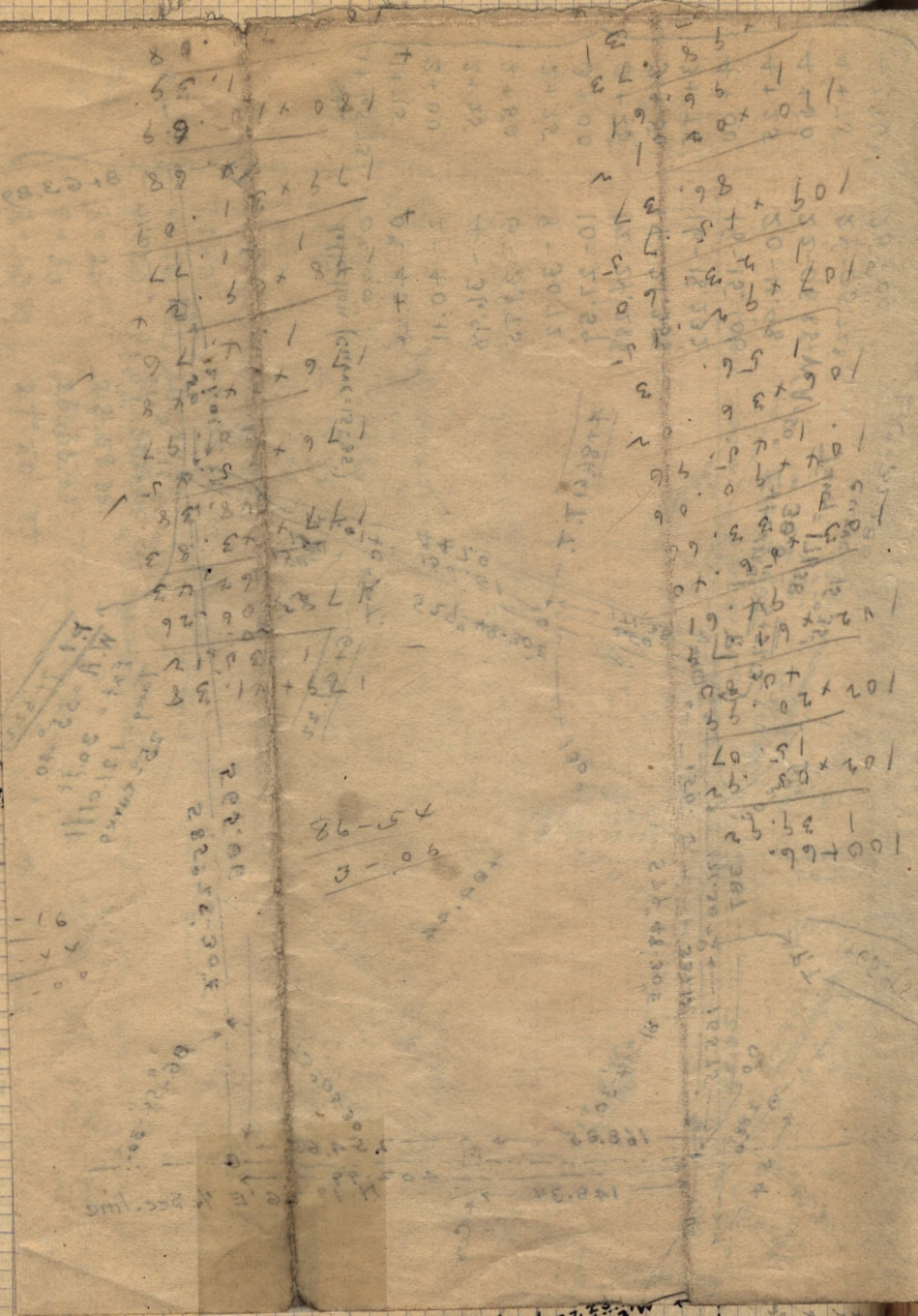
Note - at this point more E 30 ft and deflect Right 55.45 ft
 457.0 ft
 W. 1/4 Sec. Partly

city Sta.

{ A 132 + 30.13 }
 { B 21 + 60.59 }



1/4 Sec. line
 599° 23' W



1st Frame Res.
 Ed. Robbins old
 N.E. Cor.
 30° 40'